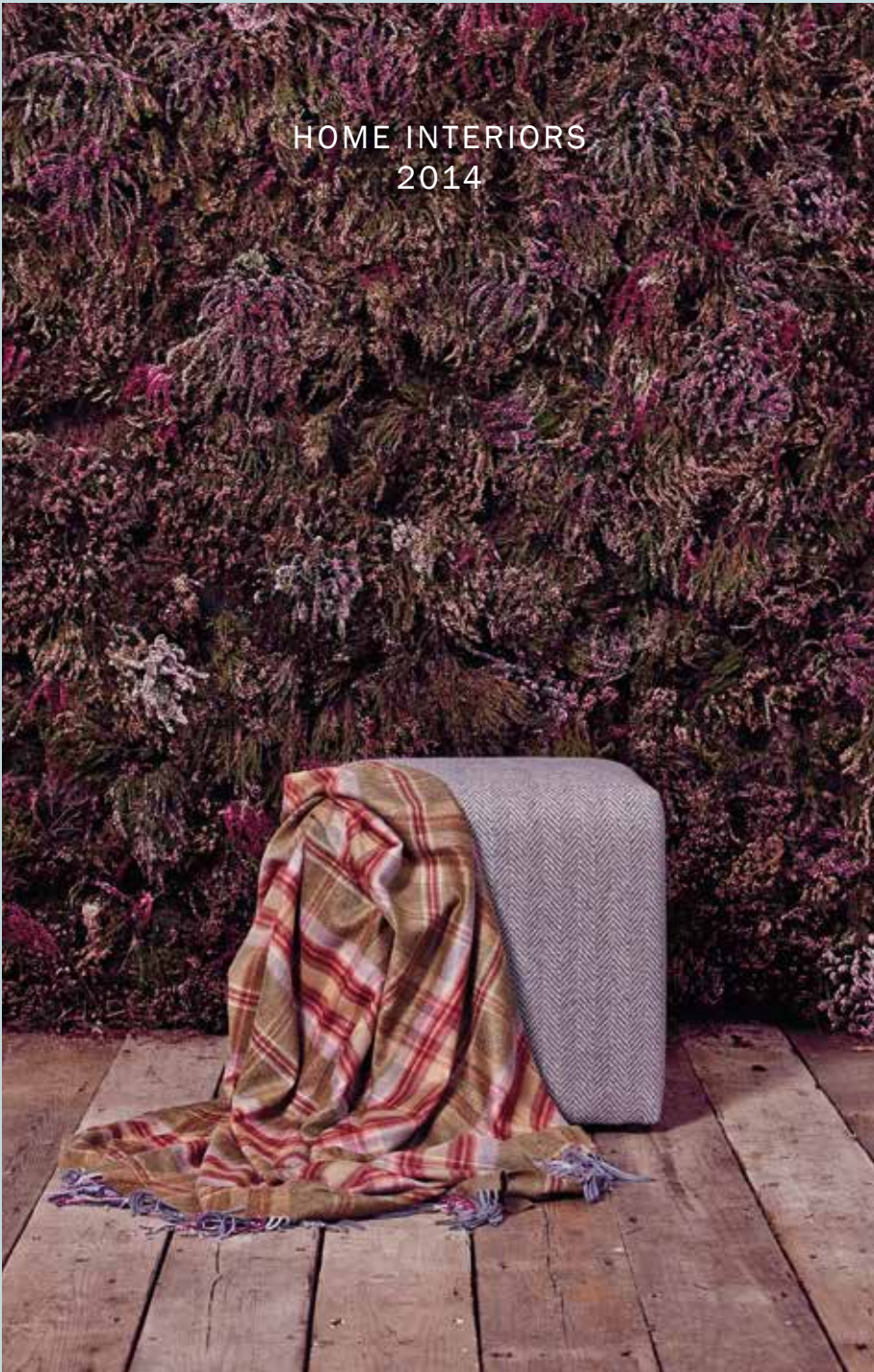


JOHNSTONS OF ELGIN  
SINCE 1797

CASHMERE & FINE WOOLLENS  
MADE IN SCOTLAND



## ICONIC

---

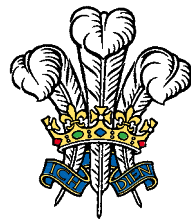
Johnstons of Elgin has created classic, contemporary and timeless pieces since 1797. Using only the finest fibres, and traditional methods passed from generation to generation, every product reflects our Scottish heritage and historic values.

Recognised around the world, our iconic pieces showcase the strength and integrity at the heart of this family business.

As experts in cashmere and fine woollens, we ensure that our products are hand finished and made to last. With timeless pieces reappearing season after season, our designs remain true to their origins and heritage. The quality, endurance and style of these classic items can be relied upon.

Highly skilled designers and technicians create the finest products, using traditional machinery, with generations of expertise. As far back as 1851, James Johnston received a medal for 'superb vicuña shawls' at the Great Exhibition at Crystal Palace.

A Royal Warrant of Appointment as suppliers of Tweed to HRH The Prince of Wales gives the ultimate seal of approval; it demonstrates the highest level of service, quality and excellence.



BY APPOINTMENT TO  
HIS ROYAL HIGHNESS THE PRINCE OF WALES  
MANUFACTURERS OF ESTATE TWEED WOOLLEN FABRIC  
JOHNSTONS OF ELGIN  
MORAY, SCOTLAND

JOHNSTONS OF ELGIN  
SINCE 1797

CASHMERE & FINE WOOLLENS  
MADE IN SCOTLAND





### WOMENS CASHMERE

In luxuriously soft, pure cashmere, our women's knitwear collection is relaxed, stylish and versatile. Showcasing elegant rib and shawl detailing, and feature cables, it can be dressed up or down for any occasion.



### WOVEN ACCESSORIES

With traditional tartans, contemporary checks and double sided plains; classic pieces include the cashmere wrap and our heritage scarves. All are finished with a unique ripple effect created by natural teasels.



### MENS CASHMERE CABLE SWEATER

This classic cable and rib design epitomizes our men's knitwear collection. Versatile and comfortable, with a classic design, the knit is lightweight and luxurious to touch.

### KNITTED ACCESSORIES

Our textured rib, easy-to-wear scarves, are complemented by stand out pieces, such as the timeless Aran cable hat design from our stitch archives, and pretty, cable-detailed gloves.



### CASHMERE THROW

Our throws date back to the early days of the business. Their use has evolved; from knee blankets in railway carriages, to home decoration. Every piece goes through thirty steps from start to finish, all under the watchful eyes of skilled craftsmen and women.



### CLOTH

Saxony Tweed cloth is made from the finest merino wool, with colours inspired by the grouse moors of the Scottish Highlands. Bracken, gorse and lovat are woven in twill and combined in a classic, but contemporary, window pane check.





SCOTLAND PLAIN & SIMPLE ACCESSORIES



WHITE & GREY  
WA000055 RU4936



WHITE & TAUPE  
WA000055 RU4937



WHITE & BLUE  
WA000055 RU4938

**SIMPLE CHECK THROW**  
100% Cashmere  
Dimensions: 190cm x 140cm

Johnstons of Elgin's 2014 home fabric range, Scotland Plain and Simple, draws inspiration from our fabric pattern books, One and Two.

Fashioned from softly twisted linen and lambswool yarns, these effortlessly natural designs epitomize understated elegance.

With richly toned mélanges and tweedy marls; subtly interesting surfaces create a warm, inviting feel.

Designs include neat herringbones, jacquard glen checks and textural plains.

The collection is classic yet modern and extremely versatile.

# SCOTLAND PLAIN & SIMPLE





**TEVIOT WICKER**  
Code: CD000075 UB127811



**TEVIOT MALT**  
Code: CD000075 UA127823



**TEVIOT SEASPRAY**  
Code: CD000075 UB127813

**TEVIOT**  
100% Pure New Wool  
Width: 140cm  
Vertical Repeat: /  
Horizontal Repeat: /



**TEVIOT PUMICE**  
Code: CD000075 UB127824



**TEVIOT NUTMEG**  
Code: CD000075 UE127823

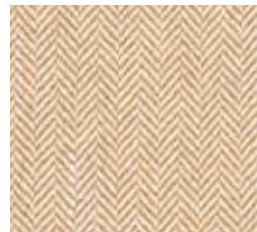


**TEVIOT BRACKEN**  
Code: CD000075 UD127824

**TEVIOT**  
100% Pure New Wool  
Width: 140cm  
Vertical Repeat: /  
Horizontal Repeat: /



**CONON ALMOND**  
Code: CD000112 UA176011

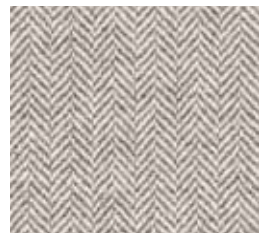


**CONON STRAW**  
Code: CD000112 UA176012



**CONON REDCURRANT**  
Code: CD000112 UA176015

**CONON**  
100% Lambswool  
Width: 140cm  
Vertical Repeat: /  
Horizontal Repeat: /



**CONON PEWTER**  
Code: CD000112 UA176013

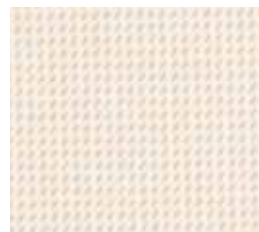


**CONON MERLIN**  
Code: CD000112 UA176014



**CONON FJORD**  
Code: CD000112 UA176016

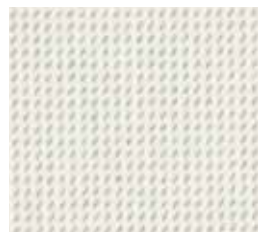
**CONON**  
100% Lambswool  
Width: 140cm  
Vertical Repeat: /  
Horizontal Repeat: /



**SPEY STONE**  
Code: CB000349 UA156511



**SPEY SHADOW**  
Code: CB000349 UB156511

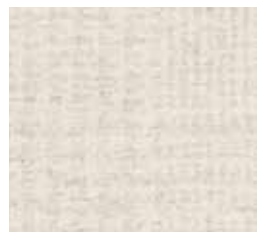


**SPEY REFLECTION**  
Code: CB000349 UC156511

**SPEY\***  
91% Wool 9% Linen  
Width: 140cm  
Vertical Repeat: /  
Horizontal Repeat: /



**DEVERON CALICO**  
Code: CD000190 UA129017



**DEVERON FROST**  
Code: CD000190 UA129012



**DEVERON CELEDON**  
Code: CD000190 UA129016

**DEVERON**  
100% Pure New Wool  
Width: 140cm  
Vertical Repeat: 17cm  
Horizontal Repeat: 15cm



**AFFRIC CREAM**  
Code: CD000112 UA150911



**AFFRIC HESSIAN**  
Code: CD000112 UF150918



**ETTRICK CLAY**  
Code: CB000321 UA150717



**AFFRIC DENIM**  
Code: CD000112 UE150915



**AFFRIC SPRUCE**  
Code: CD000112 UC150913



**ETTRICK GLACIER**  
Code: CB000321 UA150718



**AFFRIC OLIVINE**  
Code: CD000112 UE150917



**AFFRIC FLINT**  
Code: CD000112 UB150912



**ETTRICK PEBBLE**  
Code: CB000321 UA150722



**AFFRIC SIENNA**  
Code: CD000112 UD150916



**AFFRIC TAYBERRY**  
Code: CD000112 UD150914



**ETTRICK HONEYSUCKLE**  
Code: CB000321 UA150719

**AFFRIC**  
100% Lambswool  
Width: 140cm  
Vertical Repeat: /  
Horizontal Repeat: /

**AFFRIC**  
100% Lambswool  
Width: 140cm  
Vertical Repeat: /  
Horizontal Repeat: /

**ETTRICK\***  
66% Wool 34% Linen  
Width: 140cm  
Vertical Repeat: /  
Horizontal Repeat: /

\* THESE FABRICS HAVE A NATURAL SLUB WHICH IS AN INHERENT CHARACTERISTIC OF THE LINEN YARN

SCOTLAND PLAIN & SIMPLE ACCESSORIES



BLUE  
PR000004 RU4967



CORAL  
PR000004 RU4968



NEUTRAL  
PR000004 RU4969

**EMBROIDERED CUSHIONS**

Sourced by Johnstons of Elgin  
57% Cotton, 32% Silk, 11% Rayon  
Dimensions: 40cm x 40cm

SCOTLAND PLAIN & SIMPLE ACCESSORIES



SKY  
WD000823 RU4909



ROSE  
WD000823 RU4910



PEARL  
WD000823 RU4911

**PAISLEY THROW**

100% Extra Fine Merino  
Dimensions: 220cm x 130cm



SCOTLAND PLAIN & SIMPLE ACCESSORIES



DENIM  
PD000034 RU4973



FLINT  
PD000034 RU4972



SIENNA  
PD000034 RU4975



SPRUCE  
PD000034 RU4974



**TRADITIONAL CONTRAST CHECK CUSHION**  
100% Pure New Wool  
Dimensions: 45cm x 45cm

SCOTLAND PLAIN & SIMPLE ACCESSORIES



DENIM  
WD000100 RU4940



FLINT  
WD000100 RU4941



SIENNA  
WD000100 RU4942



SPRUCE  
WD000100 RU4943

**TRADITIONAL CONTRAST CHECK THROW**  
100% Lambswool  
Dimensions: 190cm x 140cm





SCOTLAND PLAIN & SIMPLE ACCESSORIES



RASPBERRY & TRUFFLE  
WD000556 RU4925



PURPLE & OCHRE  
WD000556 RU4926



NAVY & STEEL  
WD000556 RU4927

**CONTEMPORARY CHECK THROW**

100% Extra Fine Merino  
Dimensions: 190cm x 140cm

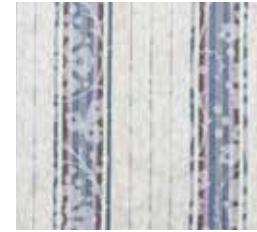






Escape to the Western Isles with this Scottish story. Capturing the inspiring colours of sandy bays, peaty moorlands and turquoise seas, the moody reflections of ever-changing skies unite in simple harmony. With stunning arts and crafts inspired jacquards and vibrant mélange plains, the wild patchwork of flora and fauna is reflected in these tranquil tones.

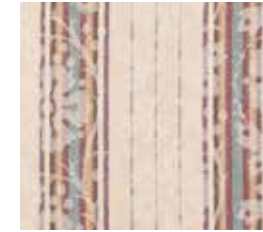
## HEBRIDEAN HIDEAWAY



**TARANSAY MINERAL**  
Code: CD000266 UC120315



**TARANSAY WOODLAND**  
Code: CD000266 UB120314



**TARANSAY SAND**  
Code: CD000266 UA120314

**TARANSAY**  
100% Lambswool  
Width: 140cm  
Vertical Repeat: 45cm  
Horizontal Repeat: 69cm



**TARBERT MINERAL**  
Code: CD000267 UC120419

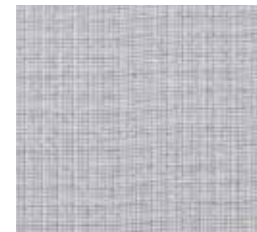


**TARBERT WOODLAND**  
Code: CD000267 UB120420



**TARBERT SAND**  
Code: CD000267 UA120420

**TARBERT**  
100% Pure New Wool  
Width: 140cm  
Vertical Repeat: /  
Horizontal Repeat: 23cm



**BENBECULA MINERAL**  
Code: CD000192 UI075913



**BENBECULA WOODLAND**  
Code: CD000192 UH075918



**BENBECULA SAND**  
Code: CD000192 UG075911

**BENBECULA**  
100% Lambswool  
Width: 140cm  
Vertical Repeat: 2cm  
Horizontal Repeat: 2cm



**BARRA MINERAL**  
Code: CD000244 UC092721



**BARRA WOODLAND**  
Code: CD000244 UB092719



**BARRA SAND**  
Code: CD000244 UA092720

**BARRA**  
100% Pure New Wool  
Width: 140cm  
Vertical Repeat: /  
Horizontal Repeat: /



**STORNOWAY MINERAL**  
Code: CD000244 UE092612



**STORNOWAY WOODLAND**  
Code: CD000244 UI092616



**STORNOWAY SAND**  
Code: CD000244 UD092611

**STORNOWAY**  
100% Pure New Wool  
Width: 140cm  
Vertical Repeat: /  
Horizontal Repeat: /



**LEWIS MINERAL**  
Code: CD000244 UF092613



**LEWIS WOODLAND**  
Code: CD000244 UH092615



**LEWIS SAND**  
Code: CD000244 UJ092617

**LEWIS**  
100% Pure New Wool  
Width: 140cm  
Vertical Repeat: /  
Horizontal Repeat: /

HEBRIDEAN HIDEAWAY ACCESSORIES



MINERAL  
WD000666 RU4611



WOODLAND  
WD000666 RU4612



SAND  
WD000666 RU4613

**HEBRIDEAN STRIPE THROW**

100% Extra Fine Merino  
Dimensions: 190cm x 140cm



MINERAL  
WD000100 RU4626



WOODLAND  
WD000100 RU4627



SAND  
WD000100 RU4628

**TARBERT WINDOWPANE THROW**

100% Lambswool  
Dimensions: 190cm x 140cm



INKY BLUE  
PR000002 RU4641



CERIDIAN  
PR000002 RU4642



RED GROUSE  
PR000002 RU4643

**HEBRIDEAN HIDEAWAY GORSE CUSHION**

Sourced by Johnstons of Elgin  
100% Linen  
Dimensions: 45cm x 45cm





The stately backdrop of an established home, with layers of history, inspires this story.

Faded shades of old gold, smoke and verdigris are interpreted into Baroque style jacquards, modern pinstripes and textured plains and herringbones; a modern and sophisticated slant on our established period house image.

## MANOR HOUSE



**TRAQUAIR SMOKE**  
Code: CD000252 UF076013



**TRAQUAIR VERDIGRIS**  
Code: CD000252 UD076012



**TRAQUAIR OLD GOLD**  
Code: CD000252 UC076015

**TRAQUAIR**  
100% Pure New Wool  
Width: 140cm  
Vertical Repeat: 26cm  
Horizontal Repeat: 31cm



**THREAVE SMOKE**  
Code: CD000247 UF076121



**THREAVE VERDIGRIS**  
Code: CD000247 UD076120



**THREAVE OLD GOLD**  
Code: CD000247 UC076123

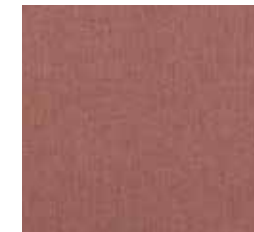
**THREAVE**  
100% Pure New Wool  
Width: 140cm  
Vertical Repeat: /  
Horizontal Repeat: 5cm



**ABBOTSFORD SMOKE**  
Code: CD000248 UB093012



**ABBOTSFORD VERDIGRIS**  
Code: CD000248 UA093011



**ABBOTSFORD OLD GOLD**  
Code: CD000248 UC093013

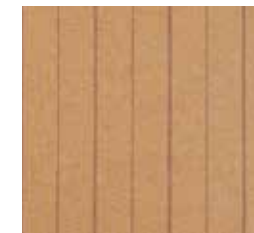
**ABBOTSFORD**  
100% Pure New Wool  
Width: 140cm  
Vertical Repeat: /  
Horizontal Repeat: /



**HOLMWOOD SMOKE**  
Code: CD000161 UC077412



**HOLMWOOD VERDIGRIS**  
Code: CD000161 UD077414



**HOLMWOOD OLD GOLD**  
Code: CD000161 UB077411

**HOLMWOOD**  
100% Lambswool  
Width: 140cm  
Vertical Repeat: /  
Horizontal Repeat: 10.5cm



**HADDO SMOKE**  
Code: CD000161 UH077422



**HADDO VERDIGRIS**  
Code: CD000161 UJ077420



**HADDO OLD GOLD**  
Code: CD000161 UG077421

**HADDO**  
100% Lambswool  
Width: 140cm  
Vertical Repeat: /  
Horizontal Repeat: 10.5cm



MANOR HOUSE ACCESSORIES



PLUM  
WA000383 RU4931



BLUEBERRY  
WA000383 RU4933



CRANBERRY  
WA000383 RU4932



OLIVE  
WA000383 RU4934

**TRAQUAIR DARK THROW**  
100% Cashmere  
190cm x 140cm



**MANOR HOUSE HEATHER CUSHION**  
PB000023 RU4636  
Dimensions: 50cm x 50cm



**OLD GOLD FRONT**  
Sourced by Johnstons of Elgin  
90% Cotton 10% Cashmere  
**VERDIGRIS RIB PLAIN BACK**  
100% Pure New Wool





COUNTRY GARDEN ACCESSORIES



BARLEY & WHITE  
WD000010 RU4921



DUCK EGG & WHITE  
WD000010 RU4922



PINK SORBET & WHITE  
WD000010 RU4923

**SMALL DICED WEAVE THROW**

100% Extra Fine Merino  
190cm x 140cm

COUNTRY GARDEN

Nostalgic images of peaceful summer days in the sunshine, strike a chord with this inviting Country Garden story.

Gentle shades of blue, soft green, and pretty shades of coral, create a charming image of the clear skies, rolling fields and wild flowers, found in our native landscape.

Inspired designs in blends of silk, linen, wool, and cashmere, alongside pure new wool stripes and herringbones, provide a subtle, yet contemporary feel, that will suit most homes.



PINK  
PR000001 RU4638



BLUE  
PR000001 RU4639



ORANGE  
PR000001 RU4640

**COUNTRY GARDEN HEATHER CUSHION**

Sourced by Johnstons of Elgin  
100% Linen  
Dimensions: 45cm x 45cm



COUNTRY GARDEN ACCESSORIES



LICHEN  
WB000669 RU4629

GLACIER  
WB000669 RU4631

BISCUIT  
WB000669 RU4632

**HOPSACK STRIPE THROW**  
75% Merino Wool 25% Angora  
Dimensions: 190cm x 140cm



COUNTRY GARDEN FABRICS • PATTERN BOOK 2



ATTADALE LICHEN  
Code: CD000244 UA091812



ATTADALE GLACIER  
Code: CD000244 UA091813

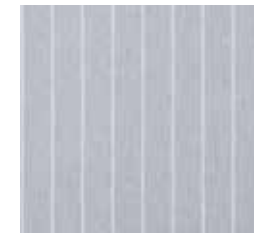


ATTADALE BISCUIT  
Code: CD000244 UB091811

**ATTADALE**  
100% Pure New Wool  
Width: 140cm  
Vertical Repeat: 13cm  
Horizontal Repeat: 12.5cm



BALMACARA LICHEN  
Code: CD000249 UA093911



BALMACARA GLACIER  
Code: CD000249 UA093913

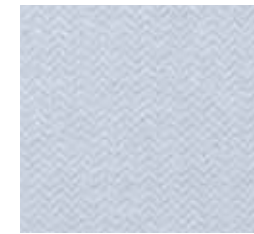


BALMACARA BISCUIT  
Code: CD000249 UB093913

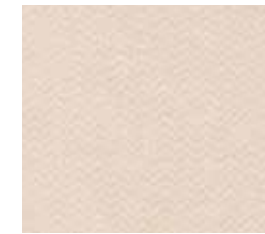
**BALMACARA**  
100% Pure New Wool  
Width: 140cm  
Vertical Repeat: /  
Horizontal Repeat: 4cm



INVEREWE LICHEN  
Code: CD000191 UA074515



INVEREWE GLACIER  
Code: CD000191 UA074514

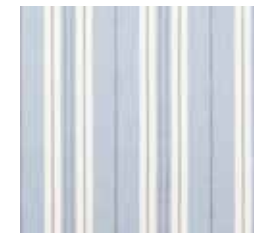


INVEREWE BISCUIT  
Code: CD000191 UA074512

**INVEREWE**  
100% Pure New Wool  
Width: 140cm  
Vertical Repeat: /  
Horizontal Repeat: 3.5cm



GLENARN LICHEN  
Code: CB000181 UA086712



GLENARN GLACIER  
Code: CB000181 UC086712



GLENARN BISCUIT  
Code: CB000181 UE086712

**GLENARN**  
43% Merino, 26% Linen,  
26% Silk, 5% Cashmere  
Width: 140cm  
Vertical Repeat: /  
Horizontal Repeat: 11.5cm



ABRIACHAN LICHEN  
Code: CB000181 UA074112



ABRIACHAN GLACIER  
Code: CB000181 UC074112



ABRIACHAN BISCUIT  
Code: CB000181 UB074112

**ABRIACHAN**  
43% Merino, 26% Linen,  
26% Silk, 5% Cashmere  
Width: 140cm  
Vertical Repeat: 24cm  
Horizontal Repeat: 10.5cm

PLAINS COLLECTION ACCESSORIES



WHITE  
WA000055 SA0000

LIGHT GREY  
WA000055 HA0200

OTTER  
WA000055 HB0333

CHARCOAL  
WA000055 HA0700



CREAM  
WA000055 SB1058

OATMEAL  
WA000055 HB0106

FUCHSIA  
WA000055 SE3019

PLUM  
WA000055 SE0616

**PLAIN THROW**  
100% Cashmere  
Dimensions: 190cm x 140cm

PLAINS COLLECTION ACCESSORIES



SAGE  
WA000055 SC0292

DUCK EGG  
WA000055 HC2019

SKY BLUE  
WA000055 SD0366



VIOLET  
WA000055 SE5068

POPPY  
WA000055 SE0510

NAVY  
WA000055 SD0707

**PLAIN THROW**  
100% Cashmere  
Dimensions: 190cm x 140cm

PLAINS COLLECTION ACCESSORIES



OATMEAL / CREAM  
WA000013 RU4085



SOFT OTTER / BEIGE  
WA000013 RU2253



MID GREY / LIGHT GREY  
WA000013 RU2254



SKY BLUE / ECRU  
WA000013 RU4597



DUCK EGG / POWDER BLUE  
WA000013 RU4903



BLUSH / CREAM  
WA000013 RU4908

**PLAIN REVERSIBLE THROW**  
100% Cashmere  
Dimensions: 190cm X 140cm







KNITTED COLLECTION ACCESSORIES



HESSIAN  
HAP01502 HB109742



LIGHT GREY  
HAP01502 HA020042



SPHINX  
HAP01502 SB011542

**CABLE KNIT THROW**  
100% Cashmere  
Dimensions: 190cm x 130cm



HESSIAN  
PA000049 HB109701



LIGHT GREY  
PA000049 HA020001



SPHINX  
PA000049 SB011501

**CABLE KNIT CUSHION**  
100% Cashmere  
Dimensions: 40cm x 40cm



NATURAL  
HAP01501 QT167242



GREY  
HAP01501 QT166842

**KNITTED CONTRAST TRIM THROW**  
100% Cashmere  
Dimensions: 190cm x 130cm



CHALK  
HAD01004 SA1082

SPHINX  
HAD01004 SB0115

OTTER  
HAD01004 HB0333



LIGHT GREY  
HAD01004 HA0200

MIRAGE  
HAD01004 SD0019

VIONNET  
HAD01004 HE4035

**CASHMERE BED SOCK**  
100% Cashmere  
One Size



CHALK  
PA000008 RU439942

SPHINX  
PA000008 RU498842

OTTER  
PA000008 RU440242



LIGHT GREY  
PA000008 RU440142

MIRAGE  
PA000008 RU499042

VIONNET  
PA000008 RU498942

**CASHMERE HOT WATER BOTTLE**  
100% Cashmere  
One Size  
Hot water bottle with cable cashmere cover.



The Pastoral Elegance story is soft, feminine and neutral; traditional fabrics inspired by the classic colour palette of historic homes.

Graceful throws complete this timeless collection, creating the ideal ambiance.

Driftwood, duck egg and sage are combined with delicate neutrals to create a sophisticated and luxurious feel.

## PASTORAL ELEGANCE



### PASTORAL ELEGANCE ACCESSORIES



CREAM BASE  
WITH SAGE & OTTER  
WA000055 RU4164

OATMEAL BASE  
WITH DUCK EGG & OTTER  
WA000055 RU4072

GREY BASE  
WITH MAUVE & GREY  
WA000055 RU4073

**PASTORAL CHECK**  
100% Cashmere  
Dimensions: 190cm x 140cm



SOFT LOVAT  
WA000374 RU3456

LIGHT GREY  
WA000374 RU3457

OTTER  
WA000374 RU3458

**AIRSPUN CASHMERE HERRINGBONE THROW**  
100% Cashmere  
Dimensions: 190cm x 140cm



DUCK EGG / CREAM  
WD000557 RU4183

SAGE / CREAM  
WD000557 RU4184

OTTER / CREAM  
WD000557 RU4185

GREY / CREAM  
WD000557 RU4186

**KINTORE JACQUARD THROW**  
100% Extra Fine Merino  
Dimensions: 190cm x 140cm



**KINTORE DRIFTWOOD**  
Code: CD000113 WA947930



**KINTORE DUCK EGG**  
Code: CD000113 WA947928



**KINTORE SAGE**  
Code: CD000113 WA947929

**KINTORE**  
100% Lambswool  
Width: 140cm  
Vertical Repeat: 31cm  
Horizontal Repeat: 14cm



**PORTSOY DRIFTWOOD**  
Code: CB000171 WM959413

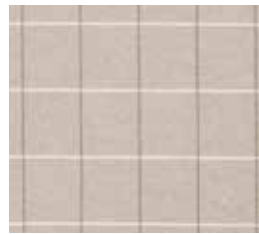


**PORTSOY DUCK EGG**  
Code: CB000171 WN959413

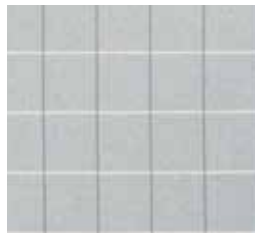


**PORTSOY SAGE**  
Code: CB000171 WL959413

**PORTSOY**  
57% Wool, 19% Linen,  
19% Silk, 5% Cashmere  
Width: 140cm  
Vertical Repeat: /  
Horizontal Repeat: 4cm



**TAIN DRIFTWOOD**  
Code: CD000075 WD965517



**TAIN DUCK EGG**  
Code: CD000075 WC965515



**TAIN SAGE**  
Code: CD000075 WA965514

**TAIN**  
100% Pure New Wool  
Width: 140cm  
Vertical Repeat: 9.5cm  
Horizontal Repeat: 8.5cm



**THURSO DRIFTWOOD**  
Code: CD000112 WA968111



**THURSO DUCK EGG**  
Code: CD000112 WA968112



**THURSO SAGE**  
Code: CD000112 WA968113

**THURSO**  
100% Lambswool  
Width: 140cm  
Vertical Repeat: /  
Horizontal Repeat: /



**DUCK EGG**  
WD000555 RU4177



**SOFT SAGE**  
WD000555 RU4178



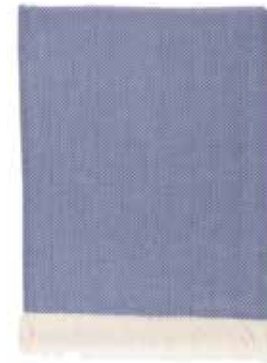
**SAND**  
WD000555 RU4179

**OMBRE TIPS THROW**  
100% Extra Fine Merino  
Dimensions: 190cm x 140cm





YOUNG COUNTRY ACCESSORIES



MARINE & CREAM  
WD000010 RU4168



CRANBERRY & CREAM  
WD000010 RU4169



MAGENTA & CREAM  
WD000010 RU4916



SKY BLUE & WHITE  
WD000010 RU4609



DRIFTWOOD & WHITE  
WD000010 RU2872



SLATE & WHITE  
WD000010 RU2874

The Young Country story creates a contemporary and informal feel. Light and airy, these shades were inspired by the simple colours of Scandinavian interiors. Cool and elegant slate is complemented by cranberry and marine to bring warmth to these striking designs. This eclectic collection is mirrored by throws in playful checks, bold stripes and distinctive herringbones.

YOUNG COUNTRY



BEIGE & WHITE  
WD000010 RU4057



DUCK EGG & CREAM  
WD000010 RU4166

**HERRINGBONE THROW**  
100% Extra Fine Merino  
Dimensions: 190cm x 140cm



YOUNG COUNTRY ACCESSORIES



WHITE WITH NAVY  
BORDERED STRIPE  
WD000257 RU3017

NAVY WITH THIN WHITE  
STRIPE  
WD000257 RU3021

CREAM WITH RED STRIPES  
WD000257 RU4171

NEW ENGLAND STRIPE THROW

100% Extra Fine Merino  
Dimensions: 190cm x 140cm



NATURALS WITH DUCK EGG,  
SAGE AND DRIFTWOOD  
WD000556 RU4181

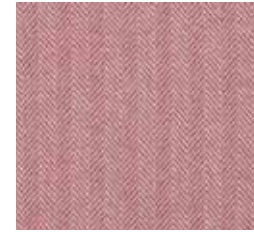
GREYS WITH CRANBERRY,  
MARINE AND SLATE  
WD000556 RU4182

COUNTRY CHECK THROW

100% Extra Fine Merino  
Dimensions: 190cm x 140cm



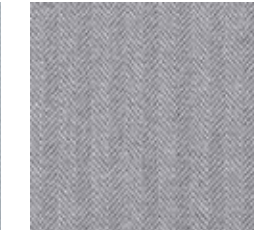
YOUNG COUNTRY FABRICS • PATTERN BOOK 1



BANFF CRANBERRY  
CD000112 WE953818



BANFF MARINE  
CD000112 WE953820

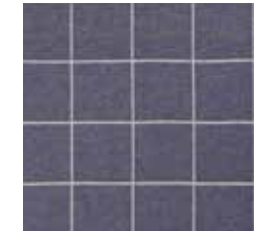


BANFF SLATE  
CD000112 WE953834

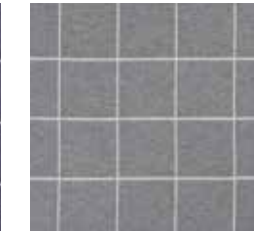
**BANFF**  
100% Lambswool  
Width: 140cm  
Vertical Repeat: /  
Horizontal Repeat: 4.5cm



CULLEN CRANBERRY  
CB000170 WB961115



CULLEN MARINE  
CB000170 WB961114



CULLEN SLATE  
CB000170 WB961116

**CULLEN**  
40% Lambswool, 30% Silk, 30%  
Linen Width: 140cm  
Vertical Repeat: 14.5cm  
Horizontal Repeat: 14.5cm



NAIRN CRANBERRY  
CD000161 WC915711



NAIRN MARINE  
CD000161 WF915711



NAIRN SLATE  
CD000161 WH915711

**NAIRN**  
100% Lambswool  
Width: 140cm  
Vertical Repeat: /  
Horizontal Repeat: /



ULLAPOOL CRANBERRY  
CD000112 WD953615



ULLAPOOL MARINE  
CD000112 WA953616

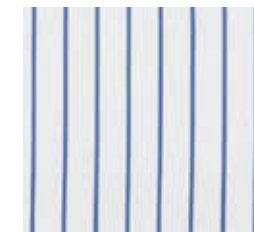


ULLAPOOL SLATE  
CD000112 WF953635

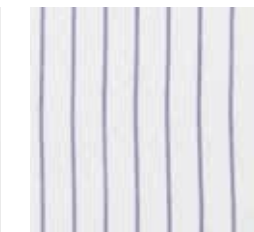
**ULLAPOOL**  
100% Lambswool  
Width: 140cm  
Vertical Repeat: 17cm  
Horizontal Repeat: 14cm



PORTSOY CRANBERRY  
CB000171 WJ959413



PORTSOY MARINE  
CB000171 WC959413



PORTSOY SLATE  
CB000171 WK959413

**PORTSOY**  
57% Wool, 19% Linen,  
19% Silk, 5% Cashmere  
Width: 140cm  
Vertical Repeat: /  
Horizontal Repeat: 4cm

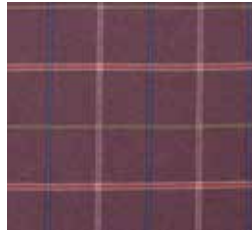


Our Scottish Heritage story is inspired by the earthy colours and charming shades of the Highlands. Clover, heather, lovat and russet all echo the colours of the landscape. Cosy throws add an instant touch of warmth and a relaxed feel to homely interiors. District checks, plaids, and textured weaves, give a modern twist to traditional designs.

# SCOTTISH HERITAGE



**CRIMOND CLOVER**  
CD000113 WD926813



**GOLSPIE CLOVER**  
CD000112 WD915813



**KINTORE CLOVER**  
CD000113 WD947926



**NAIRN CLOVER**  
CD000161 WE915714



**CRIMOND HEATHER**  
CD000113 WE926813



**GOLSPIE HEATHER**  
CD000112 WE915813



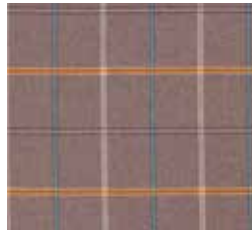
**KINTORE HEATHER**  
CD000113 WC947931



**NAIRN HEATHER**  
CD000161 WC915717



**CRIMOND LOVAT**  
CD000113 WD926811



**GOLSPIE LOVAT**  
CD000112 WD915811



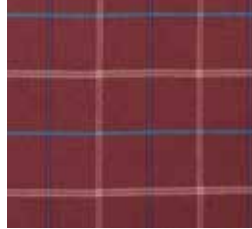
**KINTORE LOVAT**  
CD000113 WD947927



**NAIRN LOVAT**  
CD000161 WE915712



**CRIMOND RUSSET**  
CD000113 WD926812



**GOLSPIE RUSSET**  
CD000112 WD915812



**KINTORE RUSSET**  
CD000113 WD947925



**NAIRN RUSSET**  
CD000161 WE915713

**CRIMOND**  
100% Lambswool  
Width: 140cm  
Vertical Repeat: 22.5cm  
Horizontal Repeat: 19cm  
☞ ☞

**GOLSPIE**  
100% Lambswool  
Width: 140cm  
Vertical Repeat: 19.5cm  
Horizontal Repeat: 16cm  
☞ ☞

**KINTORE**  
100% Lambswool  
Width: 140cm  
Vertical Repeat: 31cm  
Horizontal Repeat: 14cm  
☞ ☞

**NAIRN**  
100% Lambswool  
Width: 140cm  
Vertical Repeat: /  
Horizontal Repeat: /  
☞ ☞



SCOTTISH HERITAGE ACCESSORIES



LOVAT  
WD000021 XU0332

CLOVER  
WD000021 XU0333

HEATHER  
WD000021 XU0334

RUSSET  
WD000021 XU0335

**SCOTTISH HERITAGE DOUBLE FACE THROW**  
100% Lambswool  
Dimensions: 190cm x 140cm



LOVAT WITH CREAM,  
LILAC, OCHRE & YELLOW  
WD000100 RU4094

HEATHER WITH CREAM,  
SAGE, ROSE & PINK  
WD000100 RU4095

RED WITH CREAM,  
BLUE, RUST & PEACH  
WD000100 RU4096

**BIRDSEYE THROW**  
100% Lambswool  
Dimensions: 190cm x 140cm

SCOTTISH HERITAGE ACCESSORIES



GOLSPIE LOVAT FRONT  
CRIMOND LOVAT BACK  
PD000026 RU438502



GOLSPIE CLOVER FRONT  
CRIMOND CLOVER BACK  
PD000026 RU438602



GOLSPIE HEATHER FRONT  
CRIMOND HEATHER BACK  
PD000026 RU438702



GOLSPIE RUSSET FRONT  
CRIMOND RUSSET BACK  
PD000026 RU438802

**SCOTTISH HERITAGE CUSHION**  
100% Lambswool  
Dimensions: 50cm x 50cm  
Double Sided







The Tweed story echoes Johnstons of Elgin's proud heritage, which spans over two centuries of skill and craftsmanship. Unique to Scotland, these vintage tweeds reflect the rural landscape. Tartan throws steeped in history, encapsulate tradition and add character to timeless country interiors.

## TWEEDS



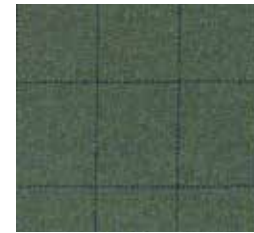
### TWEED FABRICS



**TOMINTOUL**  
 Quality: Saxony Light  
 100% Pure New Wool  
 Width: 150cm  
 Vertical Repeat: 8.5cm  
 Horizontal Repeat: 6.5cm  
 CD000062 WC878213



**BENNACHIE**  
 Quality: Saxony Tweed  
 100% Pure New Wool  
 Width: 150cm  
 Vertical Repeat: 7cm  
 Horizontal Repeat: 6cm  
 CD000079 WC878816



**INVERURIE**  
 Quality: Saxony Tweed  
 100% Pure New Wool  
 Width: 150cm  
 Vertical Repeat: 4.5cm  
 Horizontal Repeat: 4cm  
 CD000079 WA916311



**KEMNAY**  
 Quality: Saxony Tweed  
 100% Pure New Wool  
 Width: 150cm  
 Vertical Repeat: 5cm  
 Horizontal Repeat: 4.5cm  
 CD000079 WA878411



**OLDMELDRUM**  
 Quality: Estate Tweed  
 100% Pure New Wool  
 Width: 150cm  
 Vertical Repeat: 8cm  
 Horizontal Repeat: 6cm  
 CD000094 WF595011



**DUNKELD**  
 Quality: Estate Tweed  
 100% Pure New Wool  
 Width: 150cm  
 Vertical Repeat: 7.5cm  
 Horizontal Repeat: 6cm  
 CD000094 WC582215



**DAVIOT**  
 Quality: Estate Tweed  
 100% Pure New Wool  
 Width: 150cm  
 Vertical Repeat: 7.5cm  
 Horizontal Repeat: 6cm  
 CD000094 WC878015



**MELROSE**  
 Quality: Estate Tweed  
 100% Pure New Wool  
 Width: 150cm  
 Vertical Repeat: 8cm  
 Horizontal Repeat: 6cm  
 CD000094 WD582815



**FETTERANGUS**  
 Quality: Estate Tweed  
 100% Pure New Wool  
 Width: 150cm  
 Vertical Repeat: 10cm  
 Horizontal Repeat: 7cm  
 CD000094 WE582917

TWEED ACCESSORIES



LARGE CHECK /  
WARP HAIRLINE  
WD000021 XU0284



6 X 6 CHECK /  
WINDOWPANE  
WD000021 XU0285



HOUNDSTOOTH /  
BLOCK CHECK  
WD000021 XU0286



LARGE CHECK /  
WINDOWPANE  
WD000021 XU0287



CAMEL TWEED /  
CAMEL GUNCLUB  
WD000021 XU0034



HEATHER STEWART /  
HUNTING STEWART  
WD000021 XU0033



GREEN GUNCLUB / GREEN  
PLAIN  
WD000021 XU0035



RED TWEED / GREEN  
WINDOW PANE  
WD000021 XU0036



GUNCLUB /  
WINDOWPANE  
WD000021 XU0144

**DOUBLE FACE CHECK THROW**

100% Lambswool  
Dimensions: 190cm x 140cm



LAMBSWOOL TARTAN ACCESSORIES



WATSON  
WD000042 KU0006



MACKENZIE  
WD000042 KU0309



ROYAL STEWART  
WD000042 KU0303



NATURAL DRESS STEWART  
WD000042 KU0538



MUTED BLUE DRESS STEWART  
WD000042 KU0352



CALICO DRESS STEWART  
WD000042 KU0038



HAKATA CHECK  
WD000042 KU0013



MUIRESK CHECK  
WD000042 RU4924



HATTON CHECK  
WD000042 RU4918

LAMBSWOOL TARTAN AND CHECK THROW

100% Lambswool  
Dimensions: 190cm x 140cm



CASHMERE TARTAN ACCESSORIES



NATURAL DRESS STEWART  
WA000055 KU0538



MUTED BLUE DRESS STEWART  
WA000055 KU0352



HESSIAN DRESS STEWART  
WA000055 KU0010



ROYAL STEWART  
WA000055 KU0303



MALCOLM  
WA000055 KU0008



BLACK WATCH  
WA000055 KU0317



AUTUMN CHECK  
WA000055 RU2299



FOGWATT CHECK  
WA000055 RU4930



DRYBRIDGE CHECK  
WA000055 RU4928



KELLAS CHECK  
WA000055 RU4929



BALBEG CHECK  
WA000055 RU4891



MOSSAT CHECK  
WA000055 RU4890

**TARTAN AND VINTAGE CHECK THROW**

100% Cashmere  
Dimensions: 190cm x 140cm



# JOHNSTONS OF ELGIN

SINCE 1797

CASHMERE & FINE WOOLLENS  
MADE IN SCOTLAND

Newmill  
Elgin  
Moray  
Scotland IV30 4AF  
t +44 (0) 1343 554000  
f +44 (0) 1343 554055  
e enquiries@johnstonscashmere.com

Eastfield Mills  
Mansfield Road  
Hawick  
Scottish Borders  
Scotland TD9 8AA  
t +44 (0) 1450 360500  
f +44 (0) 1450 360515  
e enquiries@johnstonscashmere.com

14 Old Queen Street  
London SW1H 9HP  
t +44 (0) 20 7227 3131  
f +44 (0) 20 7227 3132  
e enquiries@johnstonscashmere.com

150 East 55th Street 3rd Floor  
New York  
NY 10022  
USA  
t +1 212 944 7779  
f +1 212 944 7222  
e enquiries@johnstonscashmere.com

JOHNSTONS GMBH  
Kaiserswerther Strasse 140  
40474 Düsseldorf  
Germany  
t +49 (0) 211 43 69 39 30  
f +49 (0) 211 43 69 39 39  
e johnstonsgmbh@johnstonscashmere.com

#401 6-12-3 Minami-Aoyama  
Minato-Ku  
Tokyo 107-0062  
Japan  
t +81 3 6427 9452  
f +81 3 6427 9453  
e johnston@dream.ocn.ne.jp

WWW.JOHNSTONSCASHMERE.COM